

EasyLyte

www.medicacorp.com

MEDICA

Products for Health Care

Na⁺/K⁺

Na⁺/K⁺/Cl⁻

Na⁺/K⁺/Li⁺

Na⁺/K⁺/Ca⁺⁺/pH





EasyLyte

EasyLyte® PLUS
Na/K/Cl
ANALYZER

Solutions Pack
Kit de soluciones
Confezione di soluzioni
Lösungspackung
Kit de soluciones
CE IEP 2121

MEDICA
80100-00-01

EasyLyte

easy inside and out

- **Easy to Use**

- Simple, menu-driven, Yes/No prompted operation
- Whole blood, serum, plasma or urine samples
- Results printed automatically in less than 60 seconds
- Automatic or on-demand calibration
- Automatic probe wiping

- **Easy to Maintain**

- All calibrants contained in convenient, disposable solutions pack
- All waste collected in solutions pack
- Disposable electrodes require no maintenance
- Modular design makes maintaining analyzer simple and fast

- **Easy to Afford**

- Low analyzer purchase price
- Low cost per test

- **Available in four models:**

- **EasyLyte** Na^+/K^+
- **EasyLyte PLUS** $\text{Na}^+/\text{K}^+/\text{Cl}^-$
- **EasyLyte Lithium** $\text{Na}^+/\text{K}^+/\text{Li}^+$
- **EasyLyte Calcium** $\text{Na}^+/\text{K}^+/\text{Ca}^{++}/\text{pH}$



Modular, maintenance-free electrodes



Cl-



Internal printer prints patient results, calibration values, quality control data, and results summaries (daily/weekly/all), flags abnormal results

Pressing Yes or No buttons is all that is required to analyze serum, plasma or whole blood.



K+

EasyLyte® PLUS
Na/K/Cl
ANALYZER

Solutions Pack
Kit de soluciones
Confezione di soluzioni
Lösungspackung
Embalagem de Soluções
Kit de soluções
CE REF 2121

MEDICA
0230 01 11

Self-contained Solutions Pack contains liquid calibrants and collects all waste, eliminates sample contact



Capillary sampler is removable and disposable



EasySampler

The modular EasySampler connects quickly to the EasyLyte Na/K, Na/K/Cl, and Na/K/Li analyzers, enhancing laboratory performance.

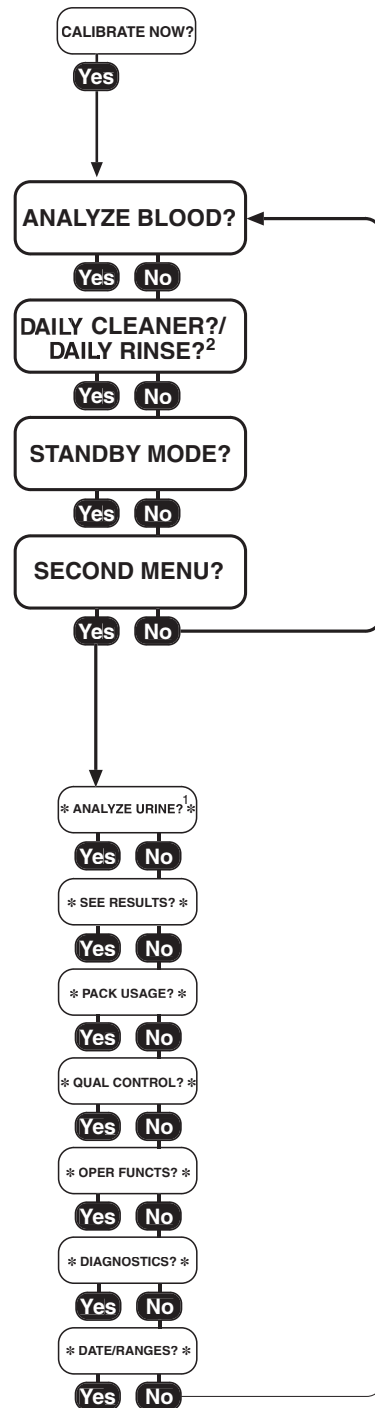
- 21 sample positions
- Dedicated Stat position
- Normal/Abnormal QC positions
- Optional auto-repeat of out-of-range values



Analyzer software insures ease of operation

Software computes quality control statistics, flags abnormal results, and monitors performance.

- Two button operation
- Automatic calibration
- User-friendly menu



Specifications (Na⁺/K⁺, Na⁺/K⁺/Cl⁻, Na⁺/K⁺/Li⁺, Na⁺/K⁺/Ca⁺⁺/pH)

CLIA Classification:	Moderate Complexity			
Sample:	Whole Blood, Serum, Plasma or Urine.			
Sample Size:	100 µL Whole Blood, Serum, Plasma, 60 µL capillary or 400 µL diluted (1:10) Urine			
Method:	Direct measurement by Ion Selective Electrode (ISE)			
Detection Range:	Blood Na ⁺ : 20–200 mmol/L	Urine Na ⁺ : 25–1000 mmol/L		
	K ⁺ : 0.2–40 mmol/L	K ⁺ : 1.0–500 mmol/L		
	Cl ⁻ : 25–200 mmol/L	Cl ⁻ : 25–500 mmol/L		
	Li ⁺ : 0.2–5.0 mmol/L			
	Ca ⁺⁺ : 0.1–6.0 mmol/L			
	pH: 6.0–8.0 Units			
Display Resolution:	Na ⁺ : 0.1 mmol/L	K ⁺ : 0.01 mmol/L	Cl ⁻ : 0.1 mmol/L	Li ⁺ : 0.01 mmol/L Ca ⁺⁺ : 0.01 mmol/L pH: 0.005 units

FEATURE	Na ⁺ /K ⁺	Na ⁺ /K ⁺ /Cl ⁻	Na ⁺ /K ⁺ /Li ⁺	Na ⁺ /K ⁺ /Ca ⁺⁺ /pH
Analysis time (blood)	55 sec	55 sec	55 sec	60 sec
Urine Mode	Yes	Yes	Yes	No
Analysis time (urine)	90 sec	90 sec	90 sec	N/A
EasySampler	Yes	Yes	Yes	No
Capillary Samples	Yes	Yes	Yes	No

Data Storage:	Patient results — up to 128 samples QC results — up to 20 each Normal, Low, and High
Calibration:	Automatic or On-Demand
Output:	32 character, 2-line alphanumeric display 40 column thermal printer Serial port (RS-232C), EasySampler port
Ambient Conditions:	15–32°C (60–90°F), <85% humidity
Power:	100/115~VAC, 50–60 Hz, 0.8A or 220~VAC, 50-60 Hz 0.4A
Size & Weight:	9.5"W x 16.5"H x 8.0"D, 13 lbs; 24 cm x 42 cm x 20 cm, 5.8 kg.