

# Ettan IPGphor 3 Isoelectric Focusing System

The Ettan™ IPGphor™ 3 is a fully integrated isoelectric focusing (IEF) system optimized to deliver high throughput, ease of use, speed, reproducibility, and high protein-loading capacity. The instrument boasts a number of key improvements over previous systems, including enhanced electrical and safety features, improved reduction in condensation, and completely redesigned casing and lid to optimize handling of CyDye™ labeled proteins and other light-sensitive samples. Temperature control and general ease of use are all features introduced from regular customer feedback. The PC control software has been updated to improve its ease of use and import/export capabilities.

The large alphanumeric graphical display accommodates up to four lines of text for fast and easy programming. Up to 10 protocols (nine steps each) can be saved, retrieved, and easily edited on the instrument. Any number of protocols can be stored on a connected PC running Ettan IPGphor 3 Control Software and uploaded to the instrument instantly. Increased safety features ensure safe high-voltage runs, and with total start/stop control from your PC, IEF runs have never been easier or more reproducible.

## Features

The Ettan IPGphor 3 Isoelectric Focusing System includes the following features:

- Temperature control from 15 to 31 °C
- Integrated high-voltage DC power supply delivering up to 10 kV
- Secure light protection during the run. Compatible with CyDye-labeled proteins and other light-sensitive stains
- Programming from the control panel or in Ettan IPGphor 3 Control Software

- Strip holders for rehydration and automatic run
- Ettan IPGphor Manifolds for running up to 12 Immobiline™ DryStrips. Cup loading improves the focusing results, particularly for basic IPG strips. For larger sample volumes, the Ettan IPGphor Manifolds facilitate paper-bridge loading and in-gel rehydration loading.

## Temperature Control

Temperature control is crucial for reproducibility. The Ettan IPGphor 3 maintains the programmed temperature precisely for the duration of the run, even for extended time periods and throughout the length of the IPG strips. In one test (using the ceramic manifold), it was set to 20 °C: the temperature measured at the anode, cathode, and in the middle of the platform remained at 20 °C for 19 h.



Fig 1. Ettan IPGphor 3 Isoelectric Focusing System.



## Manifolds

The new Ettan IPGphor Manifolds are high-throughput accessories for first-dimension isoelectric focusing of proteins using IPG strips. These manifolds meet the increasingly stringent demands of proteomics research by ensuring high-resolution, micropreparative protein analysis.

Ettan IPGphor Manifold and Manifold Light simplify isoelectric focusing of multiple samples and reduce first-dimension hands-on time to a minimum. They significantly speed up the processing of micropreparative loads in first-dimension analysis.

Designed for maximum performance and flexibility, the manifolds can handle from 1 to 12 IPG strips simultaneously. Sample equilibration can also be performed in the same tray, saving substantial time.

The manifolds are also great for paper-bridge loading. Up to 5 mg of protein can be loaded onto an Immobiline DryStrip gel using the paper bridge pads supplied with the manifolds.

Ettan IPGphor Manifold Light is constructed from a new leading-edge polymeric material and is ideal for routine general screening applications. It is easy to handle and is extremely robust.

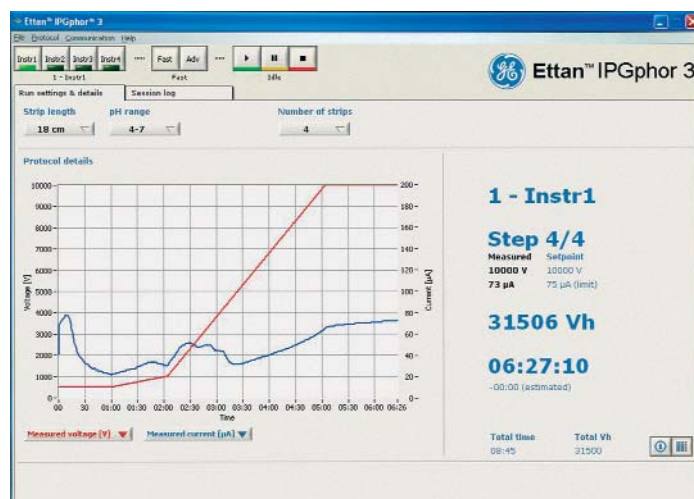
The ceramic Ettan IPGphor Manifold exhibits exceptionally uniform thermal characteristics and is designed for the most stringent applications. The high heat conductivity of the ceramic material prevents any "hot spots" that can distort 2-D electrophoresis maps.

## Programming

The Ettan IPGphor 3 control panel allows up to 10 user-defined IEF protocols, each with nine steps. Programmable functions include rehydration time, platform temperature, current limit, voltage limit for each step, voltage step or gradient, and step duration.

Ettan IPGphor 3 Control Software allows easy programming on a PC (Fig 2). Recommended run parameters are obtained by giving strip length and pH gradient. Protocols created are presented as graphs, stored, and loaded onto the Ettan IPGphor 3. The software records the run parameters over time and present data as graphs and log files. Data can be saved or exported to spreadsheet software. Ettan IPGphor 3 Control Software is a valuable aid in documenting results, optimizing run parameters, and ensuring GLP compliance.

Ettan IPGphor 3 Control Software can be used to control up to four Ettan IPGphor 3 units at one time, each running a different program. To control multiple units from one computer, an optional junction box is necessary.



**Fig 2.** Ettan IPGphor 3 Control Software allows easy programming and viewing of run data.

## Specifications

Electrode areas	Gold-plated copper
Capacity	Maximum of 12 strips: either up to 12 individual fixed-length strip holders, 7–24 cm, or in one manifold
Run voltage	10–10000 V in 10-V steps
Run current	0–1.5 mA (1 µA/strip step)
Platform temperature	15–31 °C ± 1 °C (internal Peltier cooling)
Temperature gradient	1 °C/min
Control panel	7-key membrane keypad
Liquid crystal display (LCD)	4 lines, 24 characters per line
Programmable parameters	Rehydration time, platform temperature, maximum current per strip, voltage limit in each step, voltage step or gradient, and step duration  User-controllable settings for the platform temperature, depending on use in rehydration mode or run mode
Programming capacity	10 protocols, with up to 9 steps each, on control unit. Unlimited number of protocols in Ettan IPGphor 3 Control Software
Serial port	RS232C, 1200 or 9600 baud, 8 data bits, 1 stop bit, no parity, no flow control. 9600 baud is mandatory for connection with PC.  A USB-to-RS232 converter is available for users without an RS232 port on their PC.
Operating temperature	15–32 °C
Operating relative humidity	0–70% noncondensing
Storage temperature	–25 to +60 °C
Power requirements	100–230 V ± 10%, 50–60 Hz, 230 VA
Dimensions (W x H x D)	278 x 160 x 471 mm
Weight	8.3 kg
Safety features	Automatic voltage cutoff when safety lid is opened

## Ordering information

Ettan IPGphor 3 Isoelectric Focusing Unit (includes cable, control software, and tutorial CD)	11-0033-64	Immobiline DryStrip pH 4-7, 18 cm	17-1233-01
		Immobiline DryStrip pH 6-9, 18 cm	17-6001-88
Ettan IPGphor Manifold, Complete	80-6498-38	Immobiline DryStrip pH 6-11, 18 cm	17-6001-97
Ettan IPGphor Manifold Light, Complete	11-0026-88	Immobiline DryStrip pH 3-10 NL, 18 cm*	17-1235-01
Immobiline DryStrip Reswelling Tray, for 7-18 cm IPG strips	80-6371-84	Immobiline DryStrip pH 3-10, 18 cm	17-1234-01
Immobiline DryStrip Reswelling Tray, for 7-24 cm IPG strips	80-6465-32		
<b>Immobiline DryStrip gels, 24 cm</b>			
Immobiline DryStrip pH 3-5.6 NL, 24 cm	17-6003-57	Immobiline DryStrip pH 3-5.6 NL, 13 cm	17-6003-55
Immobiline DryStrip pH 5.3-6.5, 24 cm	17-6003-62	Immobiline DryStrip pH 5.3-6.5, 13 cm	17-6003-60
Immobiline DryStrip pH 6.2-7.5, 24 cm	17-6003-67	Immobiline DryStrip pH 6.2-7.5, 13 cm	17-6003-65
Immobiline DryStrip pH 7-11 NL, 24 cm	17-6003-72	Immobiline DryStrip pH 7-11 NL, 13 cm	17-6003-70
Immobiline DryStrip pH 3-11 NL, 24 cm	17-6003-77	Immobiline DryStrip pH 3-11 NL, 13 cm	17-6003-75
Immobiline DryStrip pH 3.5-4.5, 24 cm	17-6002-38	Immobiline DryStrip pH 4-7, 13 cm	17-6001-13
Immobiline DryStrip pH 4.0-5.0, 24 cm	17-6002-39	Immobiline DryStrip pH 6-11, 13 cm	17-6001-96
Immobiline DryStrip pH 4.5-5.5, 24 cm	17-6002-40	Immobiline DryStrip pH 3-10 NL, 13 cm*	17-6001-15
Immobiline DryStrip pH 5.0-6.0, 24 cm	17-6002-41	Immobiline DryStrip pH 3-10, 13 cm	17-6001-14
Immobiline DryStrip pH 5.5-6.7, 24 cm	17-6002-42		
Immobiline DryStrip pH 3-7 NL, 24 cm	17-6002-43	<b>Immobiline DryStrip gels, 11 cm</b>	
Immobiline DryStrip pH 4-7, 24 cm	17-6002-46	Immobiline DryStrip pH 3-5.6 NL, 11 cm	17-6003-54
Immobiline DryStrip pH 6-9, 24 cm	17-6002-47	Immobiline DryStrip pH 5.3-6.5, 11 cm	17-6003-59
Immobiline DryStrip pH 3-10 NL, 24 cm*	17-6002-45	Immobiline DryStrip pH 6.2-7.5, 11 cm	17-6003-64
Immobiline DryStrip pH 3-10, 24 cm	17-6002-44	Immobiline DryStrip pH 7-11 NL, 11 cm	17-6003-69
		Immobiline DryStrip pH 3-11 NL, 11 cm	17-6003-74
		Immobiline DryStrip pH 4-7, 11 cm	18-1016-60
		Immobiline DryStrip, pH 6-11, 11 cm	17-6001-95
		Immobiline DryStrip pH 3-10, 11 cm	18-1016-61
<b>Immobiline DryStrip gels, 18 cm</b>			
Immobiline DryStrip pH 3-5.6 NL, 18 cm	17-6003-56	<b>Immobiline DryStrip gels, 7 cm</b>	
Immobiline DryStrip pH 5.3-6.5, 18 cm	17-6003-61	Immobiline DryStrip pH 3-5.6 NL, 7 cm	17-6003-53
Immobiline DryStrip pH 6.2-7.5, 18 cm	17-6003-66	Immobiline DryStrip pH 5.3-6.5, 7 cm	17-6003-58
Immobiline DryStrip pH 7-11 NL, 18 cm	17-6003-71	Immobiline DryStrip pH 6.2-7.5, 7 cm	17-6003-63
Immobiline DryStrip pH 3-11 NL, 18 cm	17-6003-76	Immobiline DryStrip pH 7-11 NL, 7 cm	17-6003-68
Immobiline DryStrip pH 3.5-4.5, 18 cm	17-6001-83	Immobiline DryStrip pH 3-11 NL, 7 cm	17-6003-73
Immobiline DryStrip pH 4.0-5.0, 18 cm	17-6001-84	Immobiline DryStrip pH 4-7, 7 cm	17-6001-10
Immobiline DryStrip pH 4.5-5.5, 18 cm	17-6001-85	Immobiline DryStrip, pH 6-11, 7 cm	17-6001-94
Immobiline DryStrip pH 5.0-6.0, 18 cm	17-6001-86	Immobiline DryStrip pH 3-10 NL, 7 cm*	17-6001-12
Immobiline DryStrip pH 5.5-6.7, 18 cm	17-6001-87	Immobiline DryStrip pH 3-10, 7 cm	17-6001-11

\*Increased resolution between pH 5-7.

<b>Asia Pacific</b>	Tel: +85 65 6 275 1830	Fax: +852 2811 5251
<b>Australasia</b>	Tel: +61 2 9899 0999	Fax: +61 2 9899 7511
<b>Austria</b>	Tel: 01/57606-1619	Fax: 01/57606-1627
<b>Belgium</b>	Tel: 0800 73 888	Fax: 03 272 1637
<b>Canada</b>	Tel: 1 800 463 5800	Fax: 1 800 567 1008
<b>Central, East, &amp; South East Europe</b>	Tel: +43 1 982 3826	Fax: +43 1 985 8327
<b>Denmark</b>	Tel: 45 16 2400	Fax: 45 16 2424
<b>Finland &amp; Baltics</b>	Tel: +358-(0)9-512 39 40	Fax: +358 (0)9 512 39 439
<b>France</b>	Tel: 01 69 35 67 00	Fax: 01 69 41 96 77
<b>Germany</b>	Tel: 0761/4903-490	Fax: 0761/4903-405
<b>Italy</b>	Tel: 02 27322 1	Fax: 02 27302 212
<b>Japan</b>	Tel: +81 3 5331 9336	Fax: +81 3 5331 9370

<b>Latin America</b>	Tel: +55 11 3933 7300	Fax: +55 11 3933 7304
<b>Middle East &amp; Africa</b>	Tel: +30 210 9600 687	Fax: +30 210 9600 693
<b>Netherlands</b>	Tel: 0165 580 410	Fax: 0165 580 401
<b>Norway</b>	Tel: 815 65 555	Fax: 815 65 666
<b>Portugal</b>	Tel: 21 417 7035	Fax: 21 417 3184
<b>Russia &amp; other C.I.S. &amp; N.I.S</b>	Tel: +7 (095) 232 0250, 956 1137	Fax: +7 (095) 230 6377
<b>South East Asia</b>	Tel: 60 3 8024 2080	Fax: 60 3 8024 2090
<b>Spain</b>	Tel: 93 594 49 50	Fax: 93 594 49 55
<b>Sweden</b>	Tel: 018 612 1900	Fax: 018 612 1910
<b>Switzerland</b>	Tel: 0848 8028 12	Fax: 0848 8028 13
<b>UK</b>	Tel: 0800 616928	Fax: 0800 616927
<b>USA</b>	Tel: +1 800 526 3593	Fax: +1 877 295 8102

[www.gehealthcare.com/ipgphor3](http://www.gehealthcare.com/ipgphor3)

GE Healthcare  
Amersham Place  
Little Chalfont  
Buckinghamshire  
HP7 9NA  
UK

GE Healthcare reserves the right, subject to any regulatory approval if required, to make changes in specifications and features or discontinue the product described at any time without notice or obligation. Contact your GE Healthcare Representative for the most current information. © 2005 General Electric Company—All rights reserved. GE and GE Monogram are trademarks of General Electric Company. Amersham Biosciences, CyDye, Ettan, Immobiline, and IPGphor are trademarks of GE Healthcare companies.

